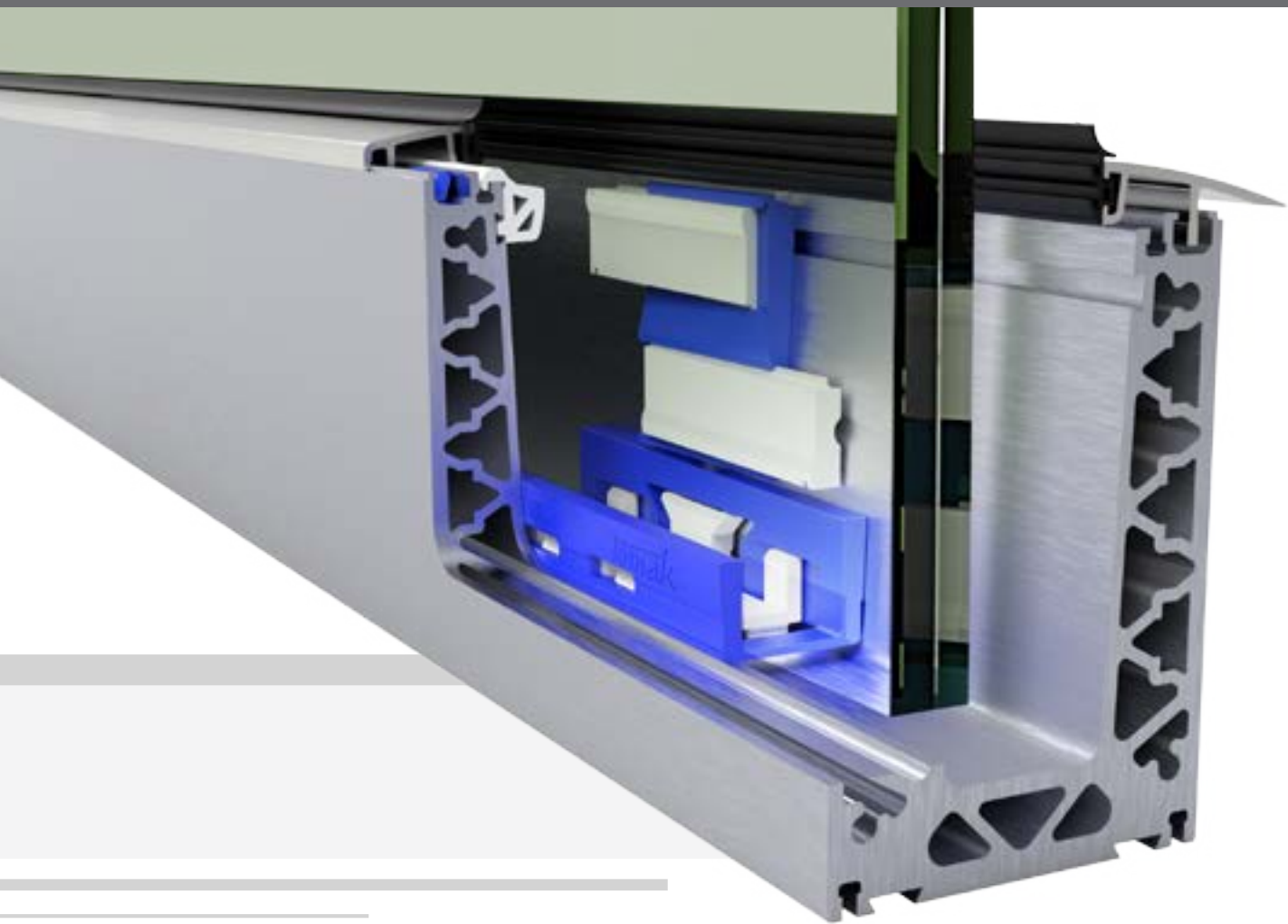




Since 1993

**NOW
INTERNATIONAL**



SIMPLICITY WITHIN COMPLEXITY

**INVENTIONS INNOVATIONS
& ON - SITE SOLUTIONS
2025 - 2026**



bimmatch

CAD IN EVERY
FORMAT



US
patent



US 16/331, 194

EU
patent



EP17848291.5





TOMAK RAILINGS – SIMPLICITY WITHIN COMPLEXITY

Tomak was founded in 1993 by the late Haim George and his son-in-law Simon Bieler.

Simon is the CEO – second generation die & tool maker who named the company after his two children Tom & Karin hence Tomak.

Tomak is a market leader of metal & glass works in.

Tomak specializes in metal & glass applications from simple hand railings, up to complex steel & glass structures, including custom made due to client specifications.

Tomak is a family business with professional dedicated team following the company over 20 years.

Tomak handles all its design development & engineering in house & even models, samples & testing are executed by the team.

Tomak has high-end computerized machinery experienced workforce, a spotless reputation at the market with the most prestigious clients all over the country.

For 3 decades **Tomak's** long experience in metal & glass industry reflects our products and service to deliver smart & easy balustrade solutions using our own system.



Simon Bieler
President & CEO.

mobile: +972-52-3054141
simon.tomak@gmail.com



Orly Bieler
VP & CFO.

mobile: +972-52-3053131
orly.tomak@gmail.com



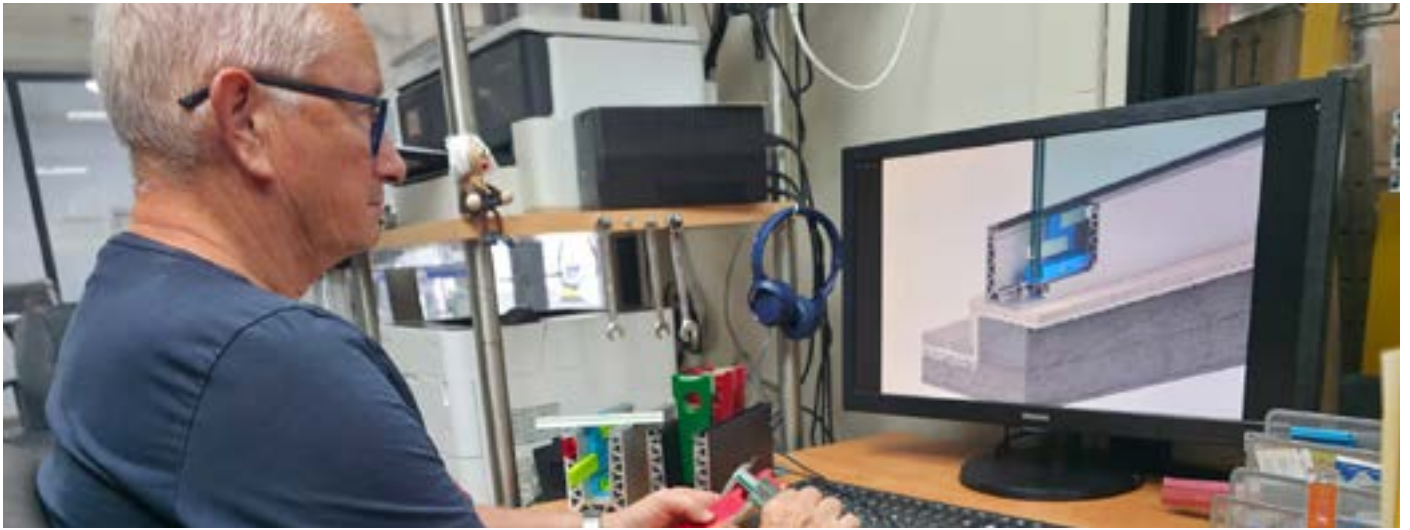
Tom Bieler
VP Regional marketing

mobile: +972-54-6115313
tomb.tomak@gmail.com



Gal Motzaeli
VP International marketing

mobile: +972-51-2568287
Gal.intmarketing@tomak-railing.com



Simon Bieler –

Born in the UK in 1963, Simon Bieler is the owner, manager and founder of Tomak.

He followed in the footsteps of his late father, Alfred Bieler, a skilled die and toolmaker from Germany, who was among the first workers at ISCAR International.

At the age of six, Simon discovered his passion for the industry while visiting his father's toolmaking department. From that moment, his fascination with research, design, and the development of metal products began—and only grew stronger over the years.

For more than three decades, Simon has been leading Tomak, continuously bringing together top professionals and experts. He remains personally involved in the company's unique and innovative production, design, and product development processes.

Tomak designs, manufactures, and installs balustrades in various materials and combinations, including glass, stainless steel, and aluminum.



Simon Bieler Already in the industry from age of 5. ISCAR Factory – 1968



Tomak Dry Glazing Railing Glass System



TOMAK SIMPLICITY WITHIN COMPLEXITY

Thanks to our extensive technical knowledge and many years of research experience, we have developed inhouse system for unique, dry glazed glass railings that have been tested and proven to be very effective. The system offers solutions for special installations in unusual forms in various prestigious projects across the country.

Our fully equipped design and development workshop as well as our extensive machining and tooling expertise made us an ideal partner for architects, designers and entrepreneurial Projects. We worked with them to convert their concept designs to reality. Anything they imagined it, we found the best way to manufacture.

we have built our reputation on creativity, innovation, excellent service and uncompromising quality both for our products or our fully customized project services.

Due to installation fo thousands of meters of glass balustrades we developed our own Universal Dry Glazing System. TOMAK's current product systems include: a registered patent for dry glaziing railing system a professional-grade DIY aluminum home fencing system a glass+aluminum banister system.

As part of "Startup Nation" we have made a technological breakthrough in our field, We are seeking involvement of large companies, who present strong advantage and assist in commercialization, manufacturing and in opening the door to global markets. If you are such company, you may benefit from collaborating with us, by sharing the risk of r&d investment and relying on our knowledge, facilities and expertise for innovative product development and market penetration.

In order to encourage the creation of partnerships in, the Innovation Authority operates a dedicated Global Enterprise R&D Collaboration Program.

If you are seeking for new product innovation to market and wish to get more info contact us and we will meet you for more details.

Our team shares the visionary of all in one tailor-made on-site solutions with the most resourceful out of the box thinking – come join us for an outstanding future opportunity.



EUROPEAN CERTIFICATION



European Patent Office
80298 MUNICH
GERMANY

Questions about this communication?
Contact Customer Services at www.epo.org/contact



Pearl Cohen Zedek Latzer Baratz UK LLP
The Gridiron Building
One Pancras Square
London N1C 4AG
ROYAUME UNI

Date 08.05.2025

Reference P-80361-EP
Applicant/Proprietor Tomak Ltd.
Application No./Patent No. 17848291.5 - 1005 / 3510231

Transmission of the certificate for a European patent pursuant to Rule 74 EPC
The certificate for a European patent is herewith transmitted.

The European patent specification can be downloaded from the EPO publication server
<https://data.epo.org/publication-server/> (see OJ EPO 2005, 126).

Note:
A corrected title page of the European patent specification will be published, if the bibliographic data have been changed after completion of the technical preparations.

For the Examining Division



USA CERTIFICATION

United States Patent
Baker et al.

Patent No.: **US 11,220,833 B2**
Date of Patent: **Jun. 11, 2022**

SYSTEM AND METHOD FOR PLATE ALIGNMENT

(71) Applicant: **TOMAK LTD., Moskov Pongla**
(72) Inventor: **Shimon Lavi-Baker, Nativim (IL); Me Brodsky, Nativim (IL)**
(73) Assignee: **TOMAK LTD., Moskov Pongla (IL)**

(*) Notice: Subject to any disclaimer, the term of this patent is extended or adjusted under 35 U.S.C. 154(b) by 307 days.

(21) Appl. No.: **16/511,194**
(22) PCT Filed: **Sep. 19, 2017**
(86) PCT No.: **PCT/IL2017/000008**
Int. Cl. (2017): **B27D 01/00**
(30) Prior Filed: **Mar. 7, 2019**
(87) PCT Pub. No.: **WO2019/041719**
PCT Pub. Date: **Mar. 25, 2019**

Prior Publication Data
US 20190107801A1 Jul. 19, 2019

(31) Int. Cl. **B27D 01/00** (2006.01)
(52) U.S. Cl. **B27D 01/00** (2013.01)
CPC: **B27D 01/00** (2013.01); **B27D 01/00** (2013.01)
(54) Field of Classification Search: **CPC: B27D 01/00** (2013.01); **B27D 01/00** (2013.01)

See application file for complete search history.

Abstract
A plate clamping device is configured to couple with an external L-shaped plate profile. The device includes an internal segment corresponding to shape in the external L-shaped plate profile and configured in 3D blocks. The internal segment includes a section aligned to at least partially accommodate an external alignment tool through a passage serving as a mounting point for the external alignment tool, and an internal segment that is configured to accommodate a section of the plate. The internal segment comprising an alignment tool wedge-like portion capable of accommodating a tip of the alignment tool.

Claims, 10 Drawing Sheets

UNITED STATES PATENT AND TRADEMARK OFFICE

ISSUE NOTIFICATION

The projected patent number and issue date are specified above.

Determination of Patent Term Adjustment under 35 U.S.C. 154 (b)
(Application filed on or after May 29, 2000)

The Patent Term Adjustment is 307 day(s). Any patent to issue from the above-identified application will include an indication of the adjustment on the front page.

If a Continued Prosecution Application (CPA) was filed in the above-identified application, the filing date that determines Patent Term Adjustment is the filing date of the most recent CPA.

Applicant will be able to obtain more detailed information by accessing the Patent Application Information Retrieval (PAIR) WEB site (<http://pair.uspto.gov>).

Any questions regarding the Patent Term Extension or Adjustment determination should be directed to the Office of Patent Legal Administration at (571)-273-7702. Questions relating to issue and publication for payments should be directed to the Application Assistance Unit (AAU) of the Office of Data Management (ODM) at (571)-272-4200.

INVENTOR(s) (Please see PAIR WEB site <http://pair.uspto.gov> for additional inventor(s).)
Shimon Lavi-Baker, Nativim, ISRAEL;
Me-Brodsky, Nativim, ISRAEL

APPLICANT(s) (Please see PAIR WEB site <http://pair.uspto.gov> for additional applicant(s).)
TOMAK LTD., Moskov Pongla, ISRAEL

The United States represents the largest, most dynamic marketplace in the world and is an unparalleled location for business investment, innovation, and commercialization of new technologies. The USA offers tremendous resources and advantages for those who invest and manufacture goods here. Through SelectUSA, our nation works to encourage and facilitate business investment. To learn more about why the USA is the best country in the world to develop technology, manufacture products, and grow your business, visit SelectUSA.gov.

SMART SYSTEM

INNOVATIVE FEATURES & PATENTED ELEMENTS

- * A UNIVERSAL CHANNEL DESIGN – SIMPLE & SYMMETRIC – adaptable to all site conditions with intermediary brackets.
- * LEVELING DEVICE integrated into the profile to ensure precise alignment
- * LEVELING ALIGNMENT MECHANISM®
Easy glass positioning adjustment with a simple lever motion.
This unique PATENT- ALIGNMENT MECHANISM allow you know the glass angle by watching the lever direction.
- * POSITION & LOCK the glass panel, at any angle using our PATENT- TRIPLE ACTION LOCKING SYSTEM®.
- * Unique design grips top and bottom for maximum strength.
- * Our CLIP-ON cover solution suits all building types facades and designed to interface with any wall finish: Drywall, tiles, glass, wood, masonry, etc.

WHY CHOOSE OUR SYSTEM

- * Universal profile • Minimal stock • Maximum efficiency.
- * Multiple clip-on cover options – compatible with every facade and wall finish.
- * Smart & Easy Balustrade Solutions – Backed by Decades of Experience
- * Cantilever mount for a clean, floating look.
- * Unique alignment mechanism **Patent** – ensuring perfect glass line-up.
Triple action **Patent** Locking system.
- * Our system's alignment and locking mechanism allow installation from **inside the balcony**, eliminating the need for lifting platforms and saving both **TIME & MONEY**.
- * Our dedicated team simplified the design and ordering process, making it easier than ever.
- * TÜV tested & certified.
- * Our system comply with the **ABZ** German standard.

SIMPLICITY WITHIN COMPLEXITY

- * Not just developers, but installers – With thousands of balcony and commercial projects delivered, **we Know how to simplify installation.**
- * Smart & Easy Balustrade Solutions, Backed by years of TOMAK'S Experience

US
patent



US 16/331, 194

EU
patent



EP17848291.5

SMART SYSTEM POSITIONING, LEVEL & LOCK SMART SYSTEM



TK 8200 – 8208
Commercial
3.0 KN & more



TK 8400 – 8408
Commercial
3.0 KN & more

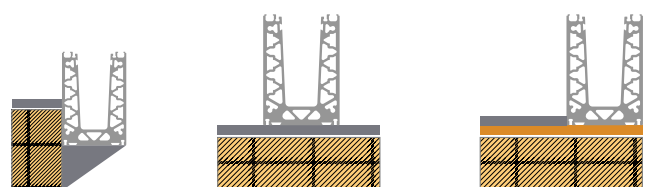
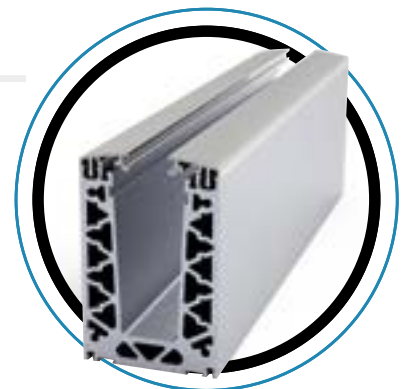


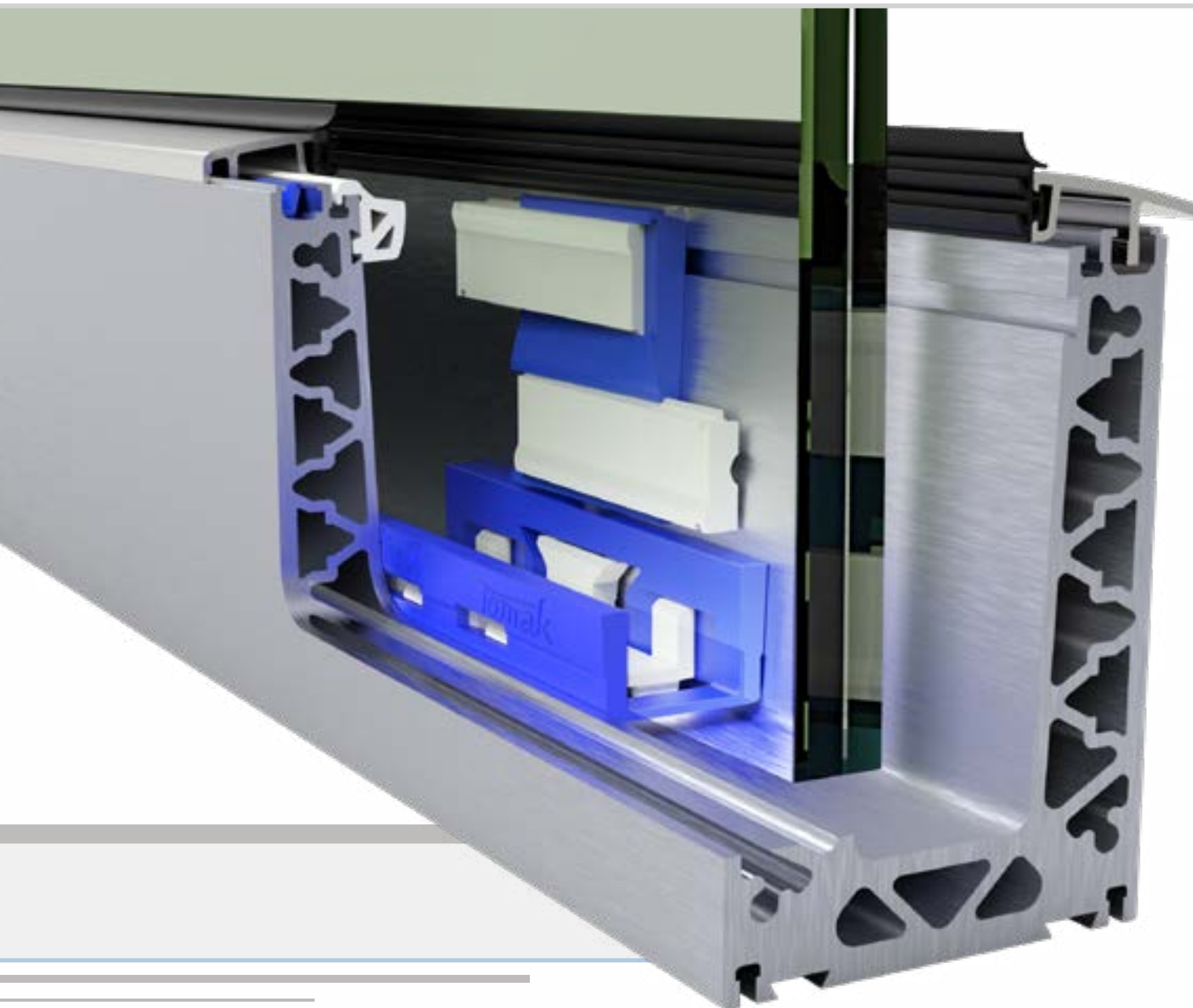
TK 6200 – 6208
Residential
1.5KN & more



TK 8250
Casting
3.0 KN & more

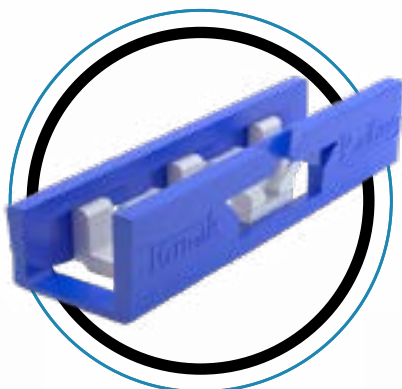
POSITION Universal Channel





LEVEL Alignment Mechanism

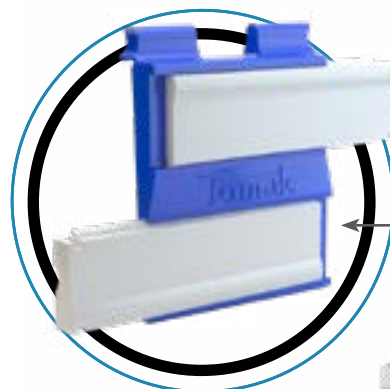
left side
-1.5°



right side
+1.5°



LOCK Triple Action Wedge



1. Upper lock



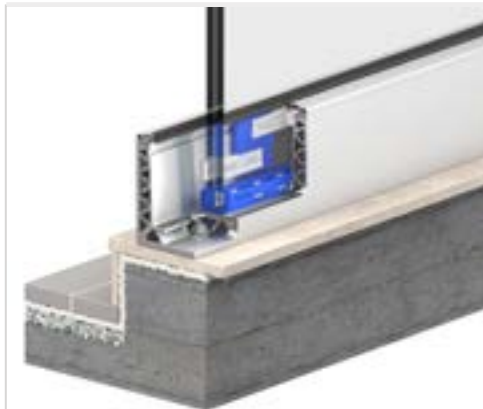
2. Bottom lock



3. Security lock



**TK-8400 – 3.0 KN profile
for 15/32" + 1/16" SGP + 15/32" glass**



TK-8400
Heavy Profile
3.0 KN Top Mount
[p.12](#)

**TK-8200 – 3.0 KN profile
for 3/8" + 1/16" SGP + 3/8" glass**



TK-8200
Heavy profile
3.0 KN top mount
[p.16](#)



TK-8404
Heavy Profile
3.0 KN Cantilever
mount
[p.13](#)



TK-8204
Heavy Profile
3.0 KN cantilever
mount
[p.17](#)



TK-8408
Heavy Profile
3.0 KN Installation
on Steel Plate
[p.14](#)



TK-8208
Heavy Profile
3.0 KN Installation
on Steel Plate
[p.18](#)

CAD IN EVERY
FORMAT



bimmatch



TK-6200 – 3.0 KN profile for 3/8" + 1/16" SGP + 3/8" glass



TK-6200
Fine profile
1.5 KN
Top mount
[p.24](#)

Casting profile

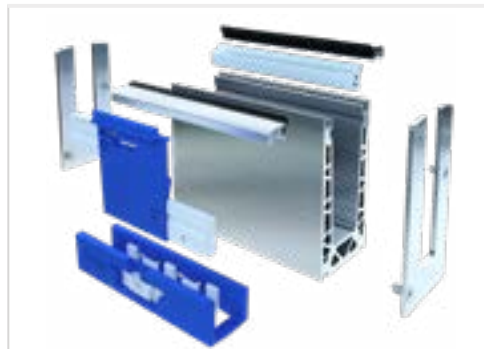


TK-8250
Casting
Profile
3.0 KN
[21 'עמ](#)



Tk-6204
Fine profile
1.5 KN cantilever
mount
[P.25](#)

SEGMENTS



TK-8290
TK-6290
segments
[p.23](#)



TK-6208
Fine profile
1.5 KN
foot mount
[p.26](#)

MORE

Tomak Tool Box [p.28](#)

Accessories [p.29](#)

Cover Ends
Corners [p.30](#)

Tüv Test Results [p.31](#)



[Installation instructions](#)

*Images are for illustration purposes only.



**US patent
US 16/331, 194**

A photograph of a modern, multi-story building with a light-colored facade and large glass balconies. A glass pergola structure is installed on a terrace level, featuring outdoor seating and potted plants. The building is set against a clear blue sky. The text 'TOMAK DRY GLAZING SYSTEM' is overlaid in the top right corner.

**TOMAK
DRY GLAZING
SYSTEM**

**TOMAK
SUSPENDED
GLASS PERGOLA**

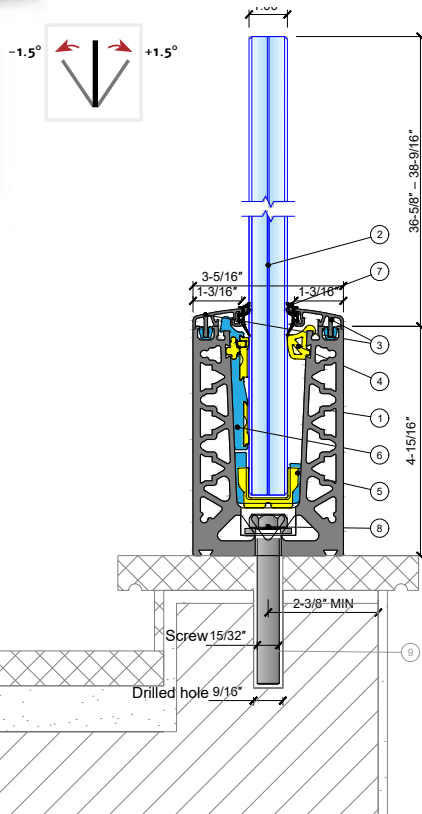
PALM BEACH RESORT

3.0 KN PROFILES

TK-8400 part | TK-8400 profile

Heavy Profile 3.0 KN Top Mount

**NEW
PRODUCTS**



- 1 Profile TK-8400
- 2 Compatible with glass using SGP lamination: 15/32 + 1/16 + 15/32
- 3 Aluminum top cover rail
- 4 Glass back support profile: P.P + GF 20%
- 5 leveling & alignment mechanism – PP + 20% GF
- 6 Triple locking mechanism (3-actions): P.P + GF 20%
- 7 Sealing gaskets: EPDM
- 8 Stainless steel threaded rod 1/2"–13 unc x 6–11/16" + chemical anchor + HILTI + nut + washer

Glass Kit 1/8 – 1/8"

Leveling & Alignment Mechanism



Triple Action Locking Mechanism



Glass Back Support



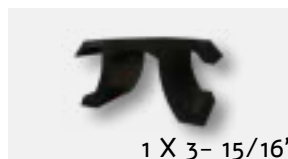
Cover Clips



Epdm Sealing Gasket

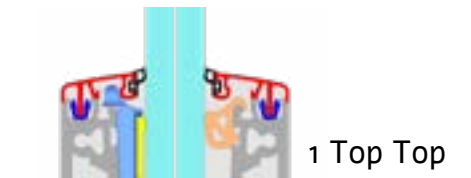


Epdm Glass Spacers



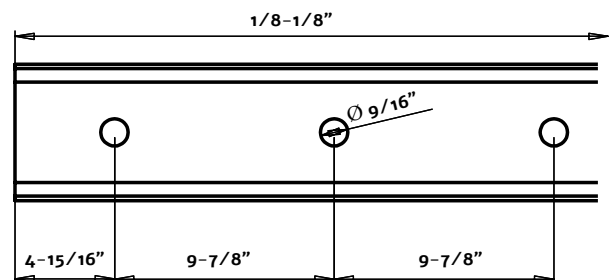
* Must be cut by the installer

Cover Sets Options



Order Kit

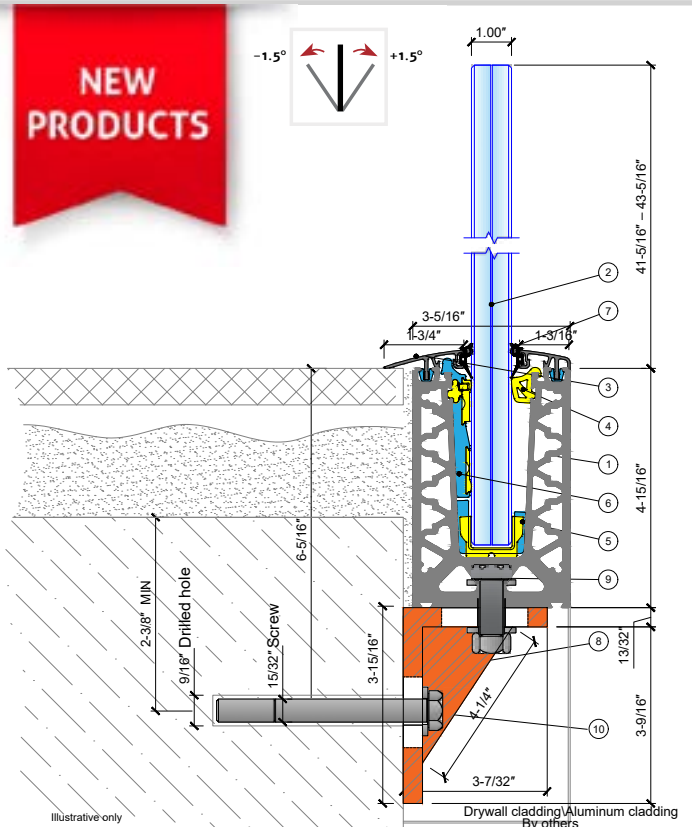
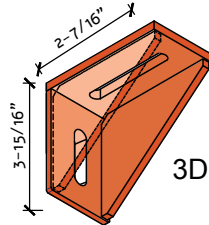
Heavy Profile Top Mount – Brushed anodized	TK-8400
Glass Kit – 15/32" + 1/16" SGP + 15/32"	GK-1"
Top Top – Cover	TTC82-1
Top Floor – Cover	TFC82-2



** Different finishes are available upon request.

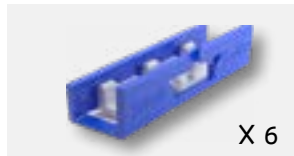
*** For End Caps, Handrails & Accessories – See page 28 – 30 of this manual.

- 1 Profile TK-8400
- 2 Compatible with glass usooing SGP lamination: $15/32'' + 1/16'' + 15/32''$
- 3 Aluminum top cover rail
- 4 Glass back support profile: P.P + GF 20%
- 5 leveling & alignment mechanism – PP + 20% GF
- 6 Triple locking mechanism (3-actions): P.P + GF 20%
- 7 Sealing gaskets: EPDM
- 8 Steel angle bracket, $3/8''$ thick, galvanized & powder coated, spaced @ $9-7/8''$ c/c
- 9 Hexagon head bolt $1/2''-13$ unc $\times 1-3/8''$ + nut + 2 washers
- 10 Stainless steel threaded rod $1/2''-13$ UNC $\times 6-11/16''$ + chemical anchor + HILTI + nut + washer



Glass Kit 1/8 – 1/8"

Leveling & Alignment Mechanism



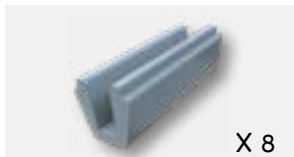
Triple Action Locking Mechanism



Glass Back Support



Cover Clips



Epdm Sealing Gasket

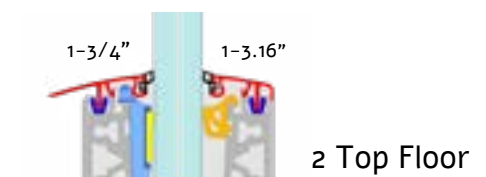
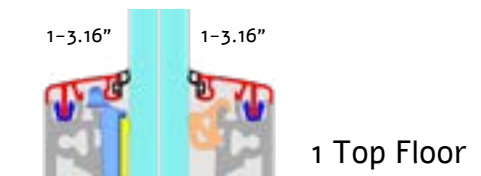


Epdm Glass Spacers

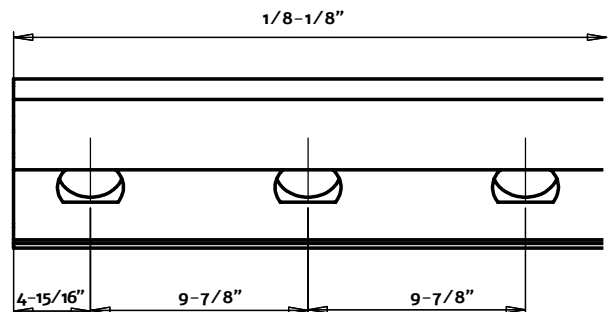


* Must be cut by the installer

Cover Sets Options



Order Kit	
Heavy Profile Side Mount – Brushed anodaized	TK-8402
Glass Kit – $15/32'' + 1/16''$ SGP + $15/32''$	GK-1"
Top Top – Cover	TTC82-1
Top Floor – Cover	TFC82-2



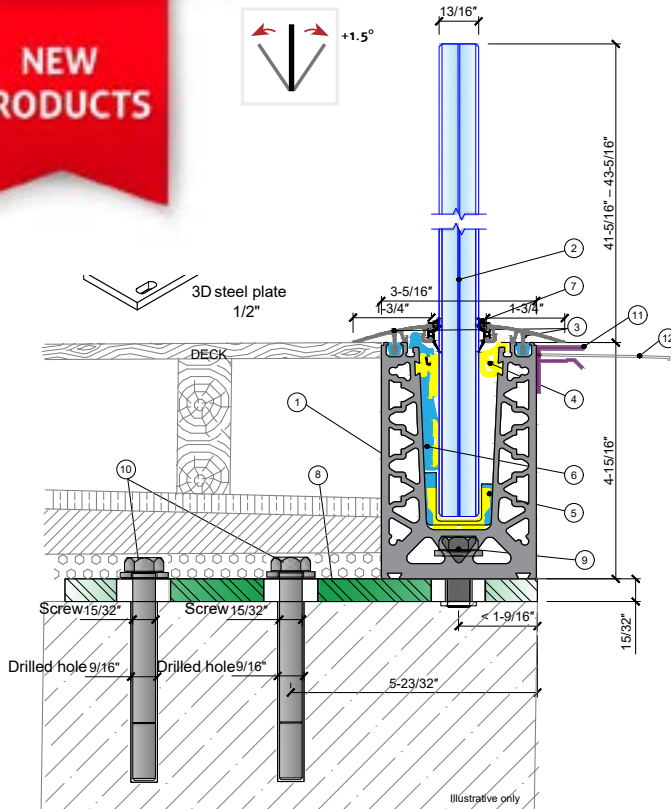
** Different finishes are available upon request.

*** For End Caps, Handrails & Accessories – See page 28 – 30 of this manual.

TK-8408 part | TK-8400 profile

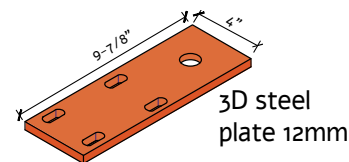
Heavy Profile 3.0 KN (Installation on Steel Plate)

**NEW
PRODUCTS**



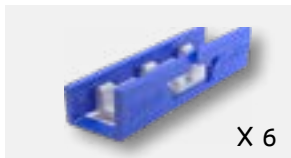
- 1 Profile: TK-8400
- 2 Compatible with glass usooing SGP lamination: 15/32" + 1/16" + 15/32"
- 3 Aluminum top cover rail
- 4 Glass back support profile: P.P + GF 20%
- 5 leveling & alignment mechanism – PP + 20% GF
- 6 Triple locking mechanism (3-actions): P.P + GF 20%
- 7 Sealing gaskets: EPDM
- 8 Steel angle bracket, 15/32" thick, galvanized & powder coated, spaced @ 9-7/8" c/c
- 9 Hexagon head bolt 3/8"-16 UNC x 1 3/8" + nut + 2 washer
- 10 Stainless steel threaded rod 1/2"-13 UNC x 6 3/4" + chemical anchor + HILTI + nut + washer

Top view of steel plate

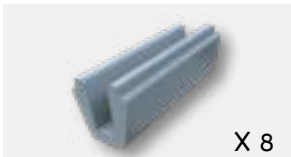


Glass Kit 1/8 - 1/8"

Leveling & Alignment Mechanism



Cover Clips



Triple Action Locking Mechanism



Epdm Sealing Gasket



Glass Back Support

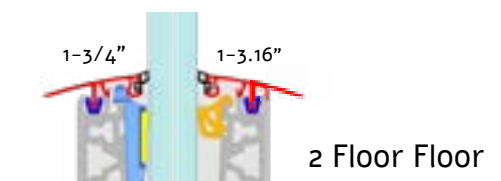
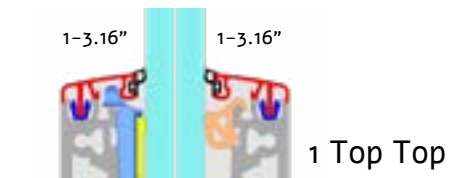


Epdm Glass Spacers

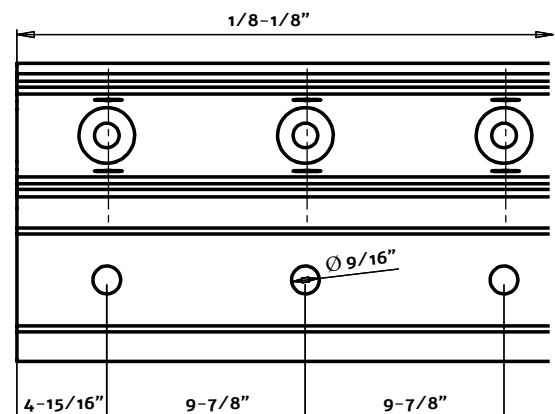


* Must be cut by the installer

Cover Sets Options



Order Kit	
Heavy Profile Top Mount – Brushed anodaized	TK-8400
Glass Kit – 15/32" + 1/16" SGP + 15/32"	GK-1"
Top Top – Cover	TTC82-1
Top Floor – Cover	TFC82-2



** Different finishes are available upon request.

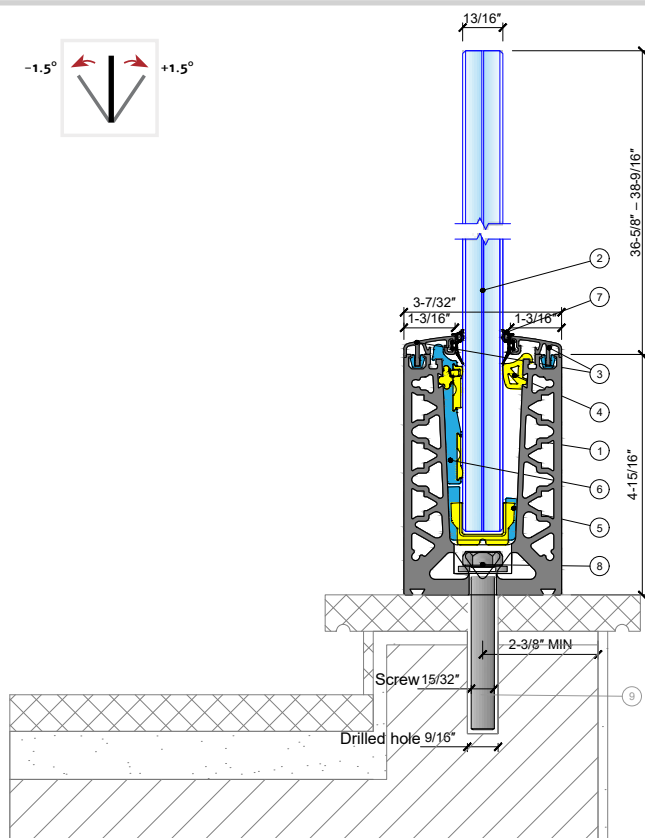
*** For End Caps, Handrails & Accessories – See page 28 – 30 of this manual.



3.0 KN PROFILES

TK-8200 part | TK-8200 profile

Heavy profile 3.0 KN top mount



- 1 Profile TK-8200
- 2 Compatible with glass using SGP lamination:
5/16" + 1/16" + 5/16"
5/16" + 1/16" + 5/16"
3/8" + 1/16" + 3/8"
3/8" + 1/16" + 3/8"
- 3 Aluminum top cover rail
- 4 Rear stabilization profile for glass: P.P + GF 20%
- 5 Glass tilting and leveling mechanism: P.P + GF 20%
- 6 Triple locking mechanism (3-action): P.P + GF 20%
- 7 Sealing gaskets: EPDM
- 8 Stainless steel threaded rod 1/2"-13 UNC x 6-11/16"
+ chemical anchor + HILTI + nut + washe

Glass Kit 1/8 - 1/8"

Leveling & Alignment Mechanism



Triple Action Locking Mechanism



Glass Back Support



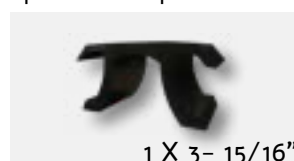
Cover Clips



Epdm Sealing Gasket

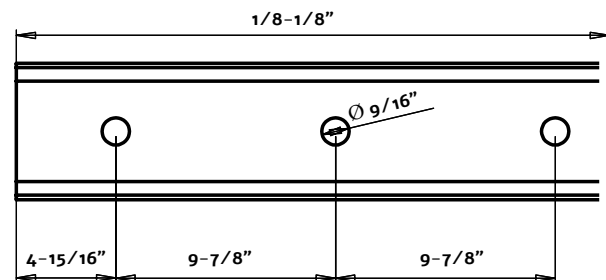
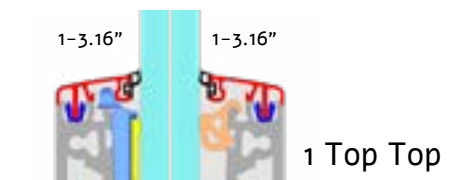


Epdm Glass Spacers



* Must be cut by the installer

Cover Sets Options



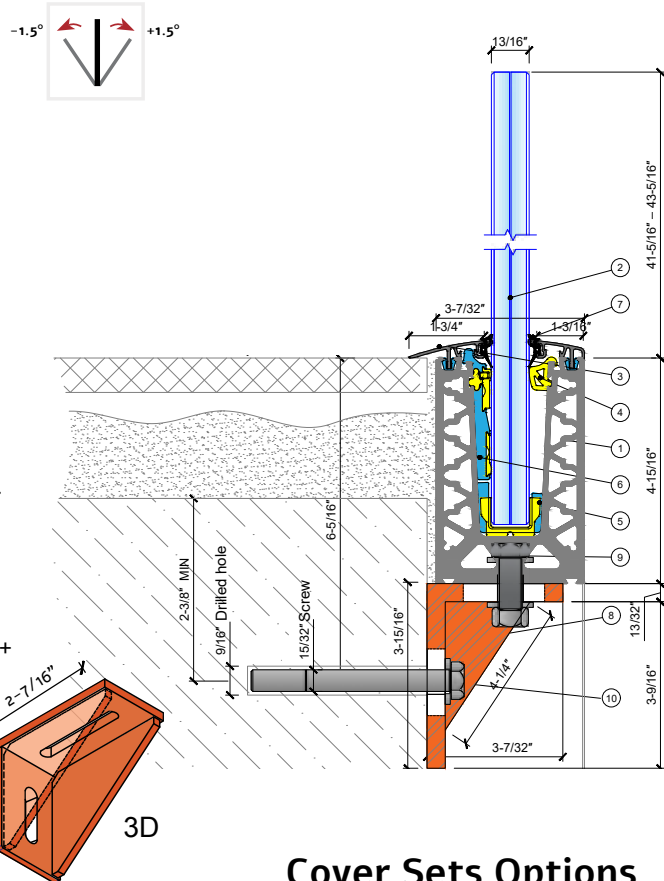
Order Kit

Heavy Profile Cantilever Top Side Mount - Brushed anodized	TK-8200
Glass Kit - 5/16" + 1/32" SGP + 5/16"	GK-21/32"
Glass Kit - 5/16" + 1/16" SGP + 5/16"	GK-11/16"
Glass Kit - 3/8" + 1/32" SGP + 3/8"	GK-13/16"
Glass Kit - 3/8" + 1/16" SGP + 3/8"	GK-27/32"
Top Top - Cover	TTC82-1
Top Floor - Cover	TFC82-2

** Different finishes are available upon request.

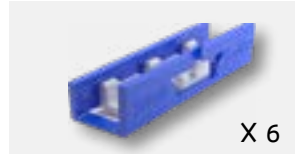
*** For End Caps, Handrails & Accessories - See page 28 - 30 of this manual.

- 1 Profile TK-8200
- 2 Compatible with glass using SGP lamination:
 $5/16'' + 1/16'' + 5/16''$
 $5/16'' + 1/16'' + 5/16''$
 $3/8'' + 1/16'' + 3/8''$
 $3/8'' + 1/16'' + 3/8''$
- 3 Aluminum top cover rail
- 4 Rear stabilization profile for glass: P.P + GF 20%
- 5 Glass tilting and leveling mechanism: P.P + GF 20%
- 6 Triple locking mechanism (3-action): P.P + GF 20%
- 7 Sealing gaskets: EPDM
- 8 Steel angle bracket, $3/8''$ thick, galvanized & powder coated, spaced @ $9-7/8''$ c/c
- 9 Hexagon head bolt $1/2''-13$ UNC $\times 1-3/8''$ + nut + 2 washers
- 10 Stainless steel threaded rod $1/2''-13$ UNC $\times 6-11/16''$ + chemical anchor + HILTI + nut + washer

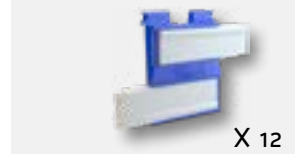


Glass Kit 1/8 - 1/8"

Leveling & Alignment Mechanism



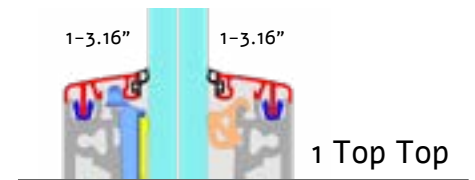
Triple Action Locking Mechanism



Glass Back Support



Cover Sets Options



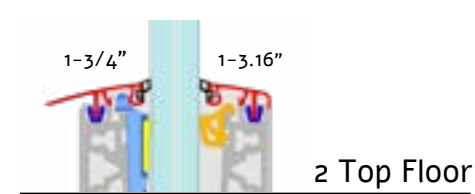
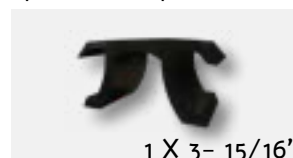
Cover Clips



Epdm Sealing Gasket



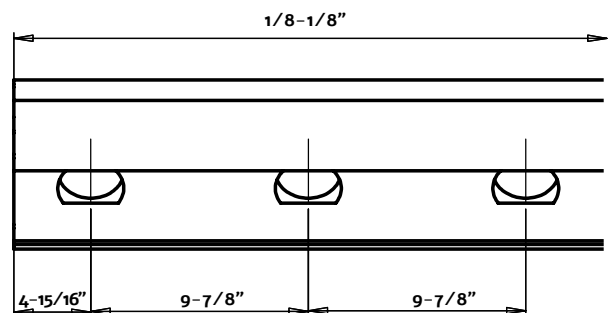
Epdm Glass Spacers



* Must be cut by the installer

Order Kit

Heavy Profile Cantilever Top Side Mount - Brushed anodized	TK-8204
Glass Kit - $5/16'' + 1/32''$ SGP + $5/16''$	GK-21/32"
Glass Kit - $5/16'' + 1/16''$ SGP + $5/16''$	GK-11/16"
Glass Kit - $3/8'' + 1/32''$ SGP + $3/8''$	GK-13/16"
Glass Kit - $3/8'' + 1/16''$ SGP + $3/8''$	GK-27/32"
Top Top - Cover	TTC82-1
Top Floor - Cover	TFC82-2

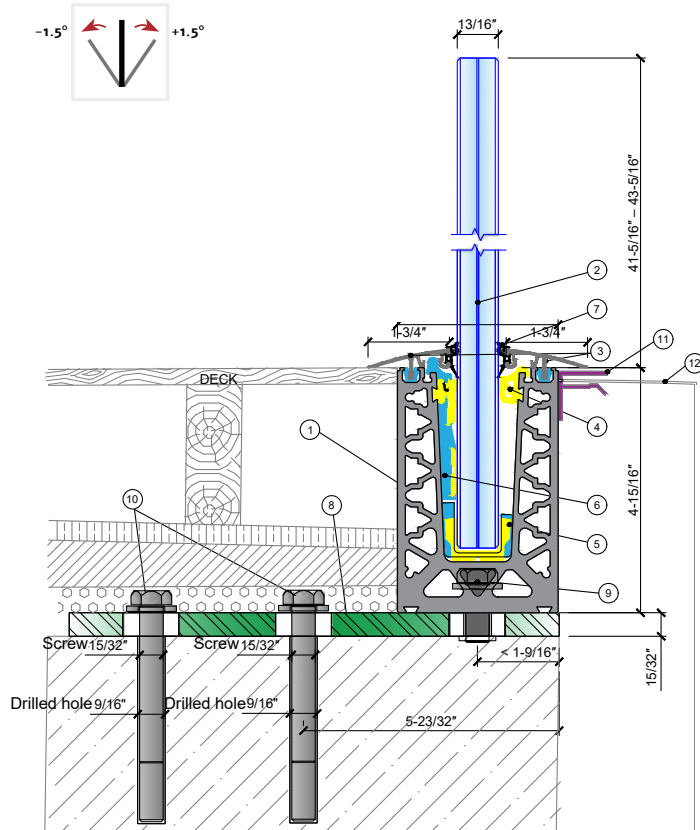


** Different finishes are available upon request.

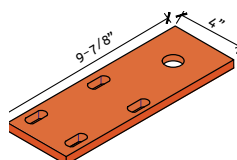
*** For End Caps, Handrails & Accessories - See page 28 - 30 of this manual.

TK-82o8 part | TK-82oo profile

Heavy Profile 3.0 KN (Installation on Steel Plate)



- 1 Profile TK-82o8
- 2 Compatible with glass using SGP lamination:
 $5/16'' + 1/16'' + 5/16''$
 $5/16'' + 1/16'' + 5/16''$
 $3/8'' + 1/16'' + 3/8''$
 $3/8'' + 1/16'' + 3/8''$
- 3 Aluminum top cover rail
- 4 Rear stabilization profile for glass: P.P + GF 20%
- 5 Glass tilting and leveling mechanism: P.P + GF 20%
- 6 Triple locking mechanism (3-action): P.P + GF 20%
- 7 Sealing gaskets: EPDM
- 8 Steel angle bracket, 15/32" thick, galvanized & powder coated, spaced @ 9-7/8" c/c
- 9 Hexagon head bolt 3/8"-16 UNC x 1 3/8" + nut + 2 washers
- 10 Stainless steel threaded rod 1/2"-13 UNC x 6 3/4" + chemical anchor + HILTI + nut + washer



Top view of steel plate

3D steel plate 12mm

Glass Kit 1/8 - 1/8"

Leveling & Alignment Mechanism



X 6

Triple Action Locking Mechanism



X 12

Glass Back Support



X 12

Cover Clips



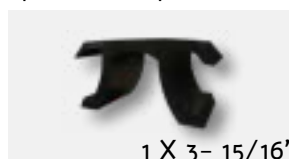
X 8

Epdm Sealing Gasket



2 X 1/8-1/8"

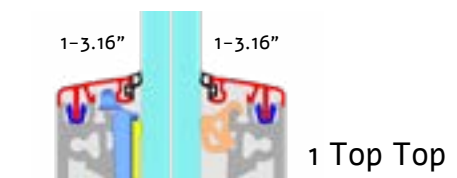
Epdm Glass Spacers



1 X 3- 15/16"

* Must be cut by the installer

Cover Sets Options



Order Kit

Heavy Profile Cantilever Top Side Mount - Brushed anodized TK-82o8

Glass Kit - 5/16" + 1/32" SGP + 5/16" GK-21/32"

Glass Kit - 5/16" + 1/16" SGP + 5/16" GK-11/16"

Glass Kit - 3/8" + 1/32" SGP + 3/8" GK-13/16"

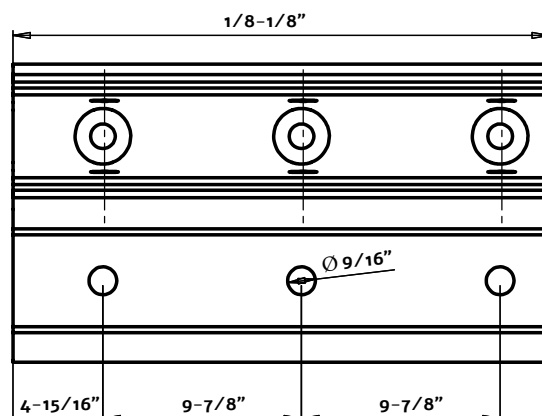
Glass Kit - 3/8" + 1/16" SGP + 3/8" GK-27/32"

Top Top - Cover TTC82-1

Top Floor - Cover TFC82-2

** Different finishes are available upon request.

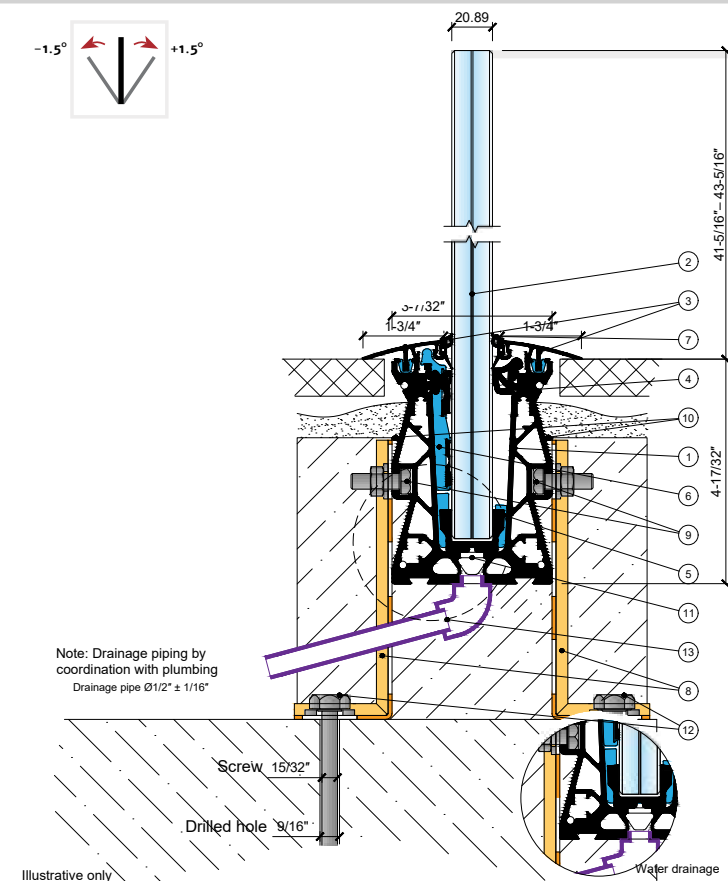
*** For End Caps, Handrails & Accessories - See page 28 - 30 of this manual.







CASTING PROFILE



- 1 Profile TK-8250
- 2 Compatible with glass using SGP lamination:
5/16" + 1/16" + 5/16"
5/16" + 1/16" + 5/16"
3/8" + 1/16" + 3/8"
3/8" + 1/16" + 3/8"
- 3 Aluminum top cover rail
- 4 Rear stabilization profile for glass: P.P + GF 20%
- 5 Glass tilting and leveling mechanism: P.P + GF 20%
- 6 Triple locking mechanism (3-action): P.P + GF 20%
- 7 Sealing gaskets: EPDM
- 8 Leveling & elevation legs (for concrete floor) Galvanized and powder-coated steel
- 9 Fastening kit: 5/16" bolt with washers and nut, per 10 ft section
- 10 Casting height marker
- 11 Drainage holes (to be coordinated with client)
- 12 Concrete screw 1/4" x 3-1/8" + chemical anchor + HILTI + nut + washer
- 13 Drainage pipe Ø1/2" ± 1/16"

Glass Kit 1/8 - 1/8"

Leveling & Alignment Mechanism



X 6

Triple Action Locking Mechanism



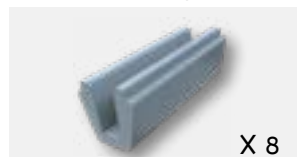
X 12

Glass Back Support



X 12

Cover Clips



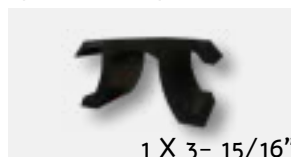
X 8

Epdm Sealing Gasket



2 X 1/8-1/8

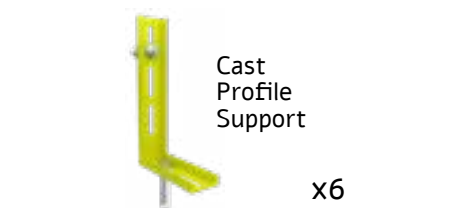
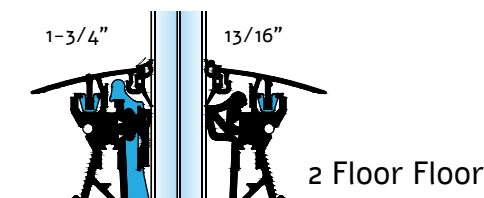
Epdm Glass Spacers



1 X 3- 15/16"

* Must be cut by the installer

Cover Sets Options



Order Kit



Casting Profile - Anodized

TK-8250

Glass Kit - 5/16" + 1/32" SGP + 5/16"

GK-21/32"

Glass Kit - 5/16" + 1/16" SGP + 5/16"

GK-11/16"

Glass Kit - 3/8" + 1/32" SGP + 3/8"

GK-13/16"

Glass Kit - 3/8" + 1/16" SGP + 3/8"

GK-27/32"

Floor Floor - Cover

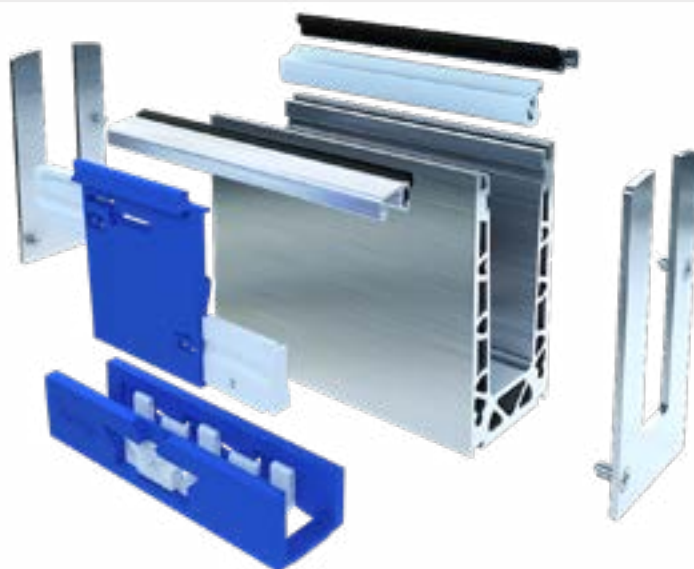
TTC62-1

** Different finishes are available upon request.



*** For End Caps, Handrails & Accessories - See page 28 - 30 of this manual.





3 KN PROFILES



TK-8290

 Order Kit	
Segmented heavy profile - Brushed anodaized	TK-8250
Glass Kit - 5/16" + 1/32" SGP + 5/16"	GK-21/32"
Glass Kit - 5/16" + 1/16" SGP + 5/16"	GK-11/16"
Glass Kit - 3/8" + 1/32" SGP + 3/8"	GK-13/16"
Glass Kit - 3/8" + 1/16" SGP + 3/8"	GK-27/32"
Top Top Cover	TTC62-1
Top Cover - Floor	TFC62-2

TK-6290

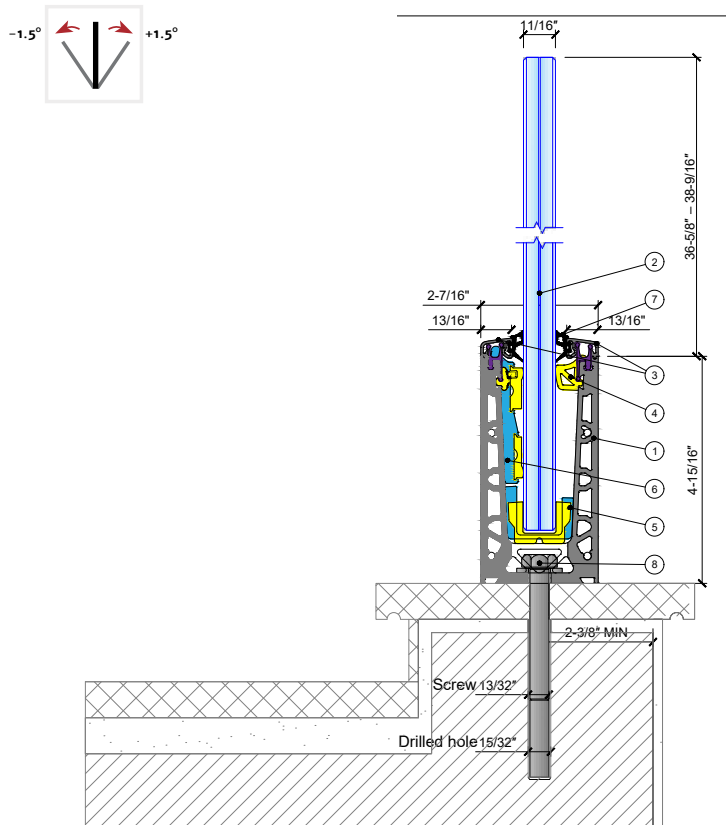
 Order Kit	
Segmented fine profile - Brushed anodaized	TK-6290
Glass Kit - 5/16" + 1/32" SGP + 5/16"	GK-21/32"
Glass Kit - 5/16" + 1/16" SGP + 5/16"	GK-11/16"
Glass Kit - 3/8" + 1/32" SGP + 3/8"	GK-13/16"
Glass Kit - 3/8" + 1/16" SGP + 3/8"	GK-27/32"
Top Top Cover	TTC62-1
Top Cover - Floor	TFC62-2

** Different finishes are available upon request.

*** For End Caps, Handrails & Accessories - See page 28 - 30 of this manual.

TK-6200 part | TK-6200 profile

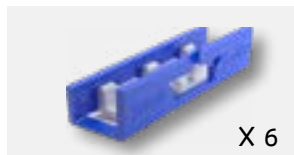
FINE PROFILE 1.5 KN TOP MOUNT



- 1 Profile TK-6200
- 2 Compatible with glass using SGP lamination:
 $5/16'' + 1/32'' + 5/16''$
 $5/16'' + 1/16'' + 5/16''$
 $3/8'' + 1/32'' + 3/8''$
 $3/8'' + 1/16'' + 3/8''$
- 3 Aluminum top cover rail
- 4 Rear stabilization profile for glass: P.P + GF 20%
- 5 Glass tilting and leveling mechanism: P.P + GF 20%
- 6 Triple locking mechanism (3-action): P.P + GF 20%
- 7 Sealing gaskets: EPDM
- 8 Stainless steel threaded rod $3/8''-16$ UNC $\times 6$ $3/4''$ + chemical anchor + HILTI + nut + washer

Glass Kit 1/8 - 1/8"

Leveling & Alignment Mechanism



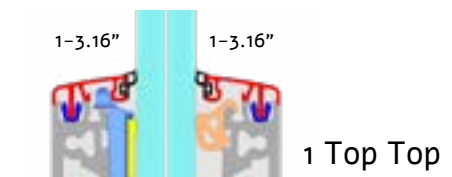
Triple Action Locking Mechanism



Glass Back Support



Cover Sets Options



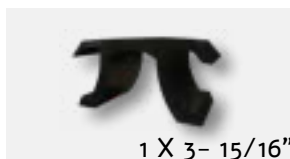
Cover Clips



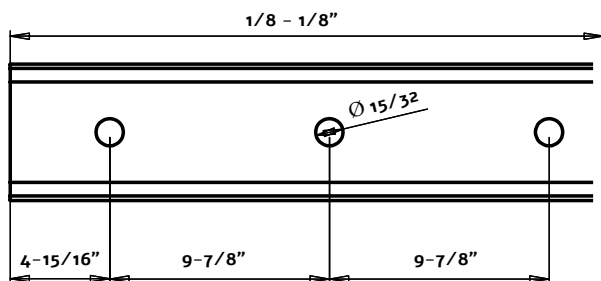
Epdm Sealing Gasket



Epdm Glass Spacers



* Must be cut by the installer



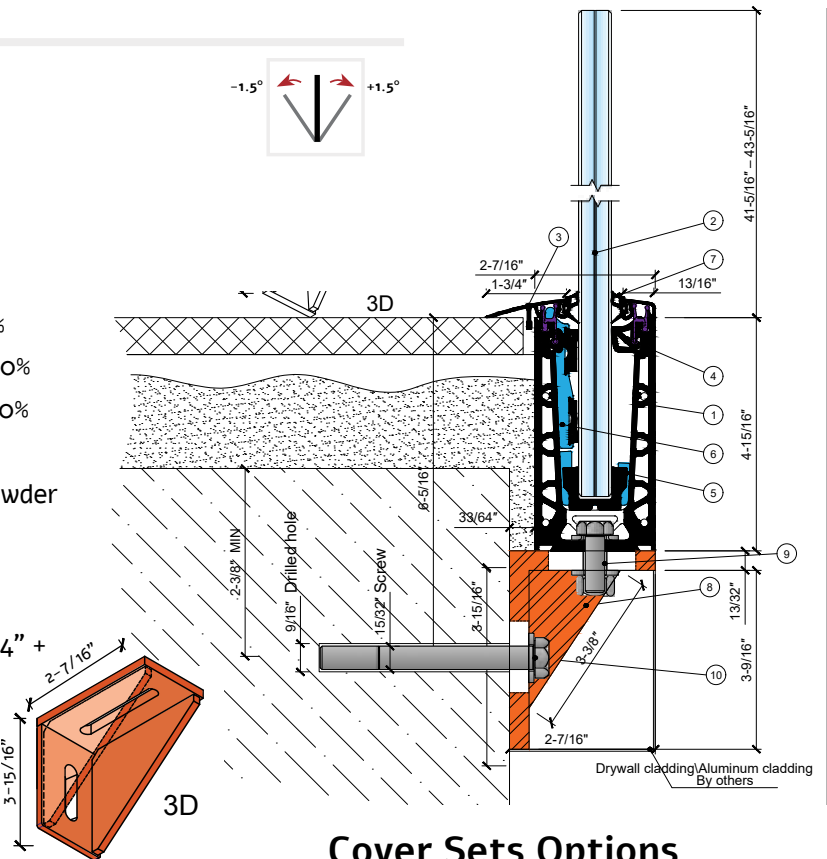
Order Kit

Fine Profile Cantilever Top Side Mount - Brushed anodized	TK-6200
Glass Kit - $5/16'' + 1/32''$ SGP + $5/16''$	GK-21/32"
Glass Kit - $5/16'' + 1/16''$ SGP + $5/16''$	GK-11/16"
Glass Kit - $3/8'' + 1/32''$ SGP + $3/8''$	GK-13/16"
Glass Kit - $3/8'' + 1/16''$ SGP + $3/8''$	GK-27/32"
Top Top - Cover	TTC62-1
Top Floor - Cover	TFC62-2

** Different finishes are available upon request.

*** For End Caps, Handrails & Accessories - See page 28 - 30 of this manual.

- 1 Profile TK-6200
- 2 Compatible with glass using SGP lamination:
5/16" + 1/16" + 5/16"
5/16" + 1/16" + 5/16"
3/8" + 1/16" + 3/8"
3/8" + 1/16" + 3/8"
- 3 Aluminum top cover rail
- 4 Rear stabilization profile for glass: P.P + GF 20%
- 5 Glass tilting and leveling mechanism: P.P + GF 20%
- 6 Triple locking mechanism (3-action): P.P + GF 20%
- 7 Sealing gaskets: EPDM
- 8 Steel angle bracket, 3/8" thick, galvanized & powder coated, spaced @ 9-7/8" c/c
- 9 Hexagon head bolt 3/8"-16 UNC x 1 3/8" + nut + 2 washers
- 10 Stainless steel threaded rod 1/2"-13 UNC x 6 3/4" + chemical anchor + HILTI + nut + washer

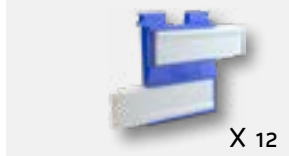


Glass Kit 1/8 - 1/8"

Leveling & Alignment Mechanism



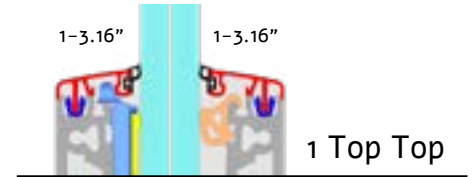
Triple Action Locking Mechanism



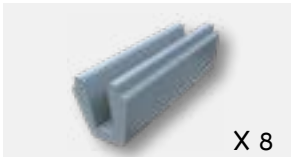
Glass Back Support



Cover Sets Options



Cover Clips



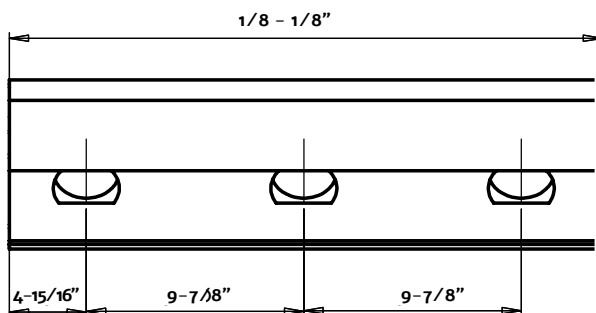
Epdm Sealing Gasket



Epdm Glass Spacers



* Must be cut by the installer



Order Kit

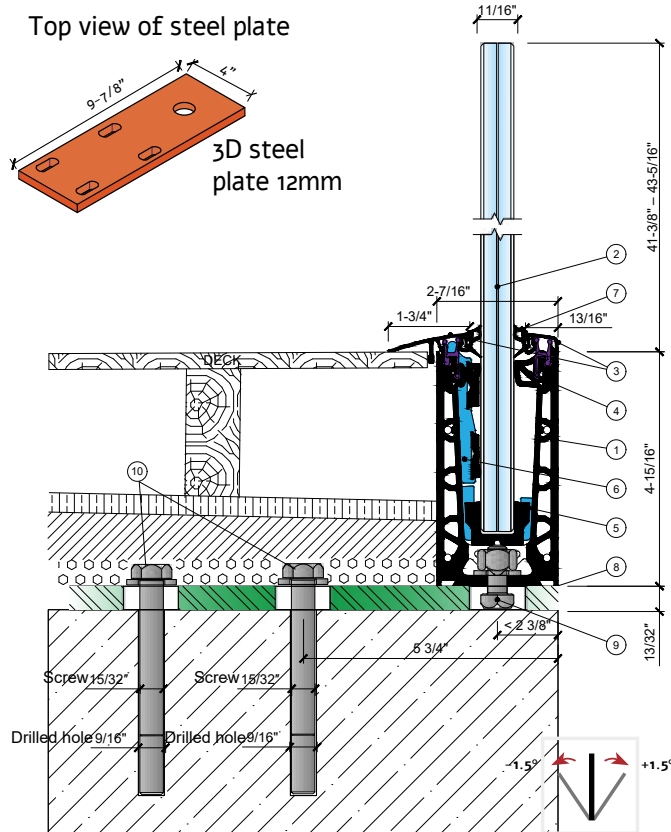
Fine Profile Cantilever Top Side Mount - Brushed anodized	TK-6204
Glass Kit - 5/16" + 1/16" SGP + 5/16"	GK-21/32"
Glass Kit - 5/16" + 1/16" SGP + 5/16"	GK-11/16"
Glass Kit - 3/8" + 1/32" SGP + 3/8"	GK-13/16"
Glass Kit - 3/8" + 1/16" SGP + 3/8"	GK-27/32"
Top Top - Cover	TTC62-1
Top Floor - Cover	TFC62-2

** Different finishes are available upon request.

*** For End Caps, Handrails & Accessories - See page 28 - 30 of this manual.

TK-6208 part | TK-6200 profile

FINE PROFILE 1.5 KN FOOT MOUNT



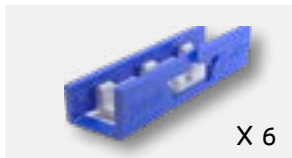
- 1 Profile TK-6200
- 2 Compatible with glass using SGP lamination:
 $5/16'' + 1/16'' + 5/16''$
 $5/16'' + 1/16'' + 5/16''$
 $3/8'' + 1/16'' + 3/8''$
 $3/8'' + 1/16'' + 3/8''$
- 3 Aluminum top cover rail
- 4 Rear stabilization profile for glass: P.P + GF 20%
- 5 Glass tilting and leveling mechanism: P.P + GF 20%
- 6 Triple locking mechanism (3-action): P.P + GF 20%
- 7 Sealing gaskets: EPDM
- 8 Steel angle bracket, 1/2" thick, galvanized & powder coated, spaced @ 9-7/8" c/c
- 9 Hexagon head bolt 3/8"-16 UNC x 1 3/8" + nut + 2 washers
- 10 Stainless steel threaded rod 1/2"-13 UNC x 6 3/4" + chemical anchor + HILTI + nut + washer

*Drawing Notes: Steel plate thickNess: 12 mm

Glass Kit 1/8 - 1/8"

Cover Sets Options

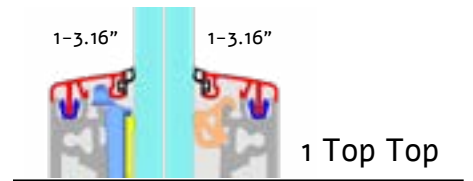
Leveling & Alignment Mechanism



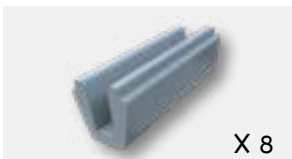
Triple Action Locking Mechanism



Glass Back Support



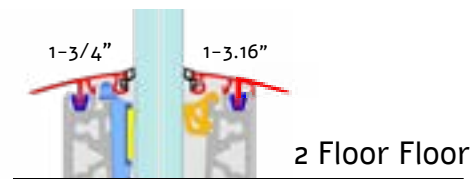
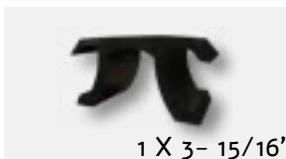
Cover Clips



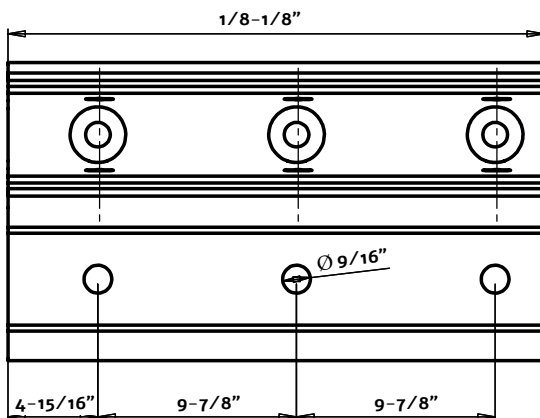
Epdm Sealing Gasket



Epdm Glass Spacers



* Must be cut by the installer



Order Kit

Fine Profile Cantilever Top Side Mount - Brushed anodized

TK-6208

Glass Kit - 5/16" + 1/32" SGP + 5/16"

GK-21/32"

Glass Kit - 5/16" + 1/16" SGP + 5/16"

GK-11/16"

Glass Kit - 3/8" + 1/32" SGP + 3/8"

GK-13/16"

Glass Kit - 3/8" + 1/16" SGP + 3/8"

GK-27/32"

Top Top - Cover

TTC62-1

Top Floor - Cover

TFC62-2

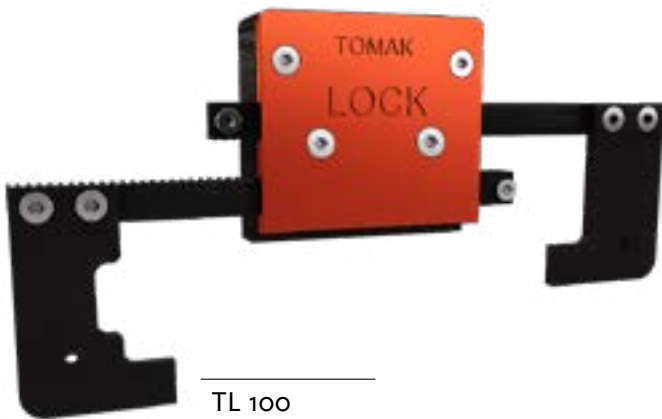
** Different finishes are available upon request.

*** For End Caps, Handrails & Accessories - See page 28 - 30 of this manual.



TOMAK TOOL BOX (INCLUDED)

Lock



TL 100

UnLock



TL 105

Tomak Aligment Handle



TAL110

Tomak Extention Soket Bolt 1/2"



TEX150

Tomak Position Level



TPL115

Tomak Hammer



TH155

Tomak Rachet 1/2" Lock



TRL120

Tomak Glass Fixing Handle



TGF125

Tomak Power Liver 1/2" X 19-11/16"



TPL130

Tomak Glass Clamp



TH140

Tomak Sockets Bolt



TSB135 - Ø 3/4"

TSB140 - Ø 11/16"

TSB145 - Ø 1/2"





Health women care center

Extention Square Profile Conector



9-7/8" Corner
1 X 4 Set



10" Straight
1 X 4 Set

Shims



SH 82-1/16"

SH 82-1/8"

SH 82-1/4"

SH 62-1/16"

SH 62-1/8"

SH 62-1/4"

Chemical Gun



Plastic Cover Protective



8260

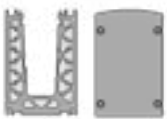
6260

unit 1.0 m long
set of 3 units

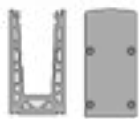
COVER ENDS AND CORNERS



Top profile cover end



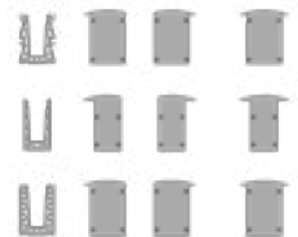
End cap TK8220



End cap TK6220



End cap TK8220



available upon request

Industrialized corners

Fits 3.0KN Profile



TK 8200

Fits 1.5.0KN Profile

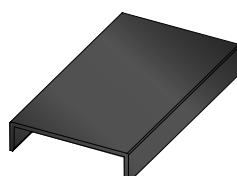
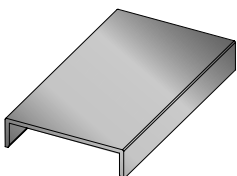


TK 6200

Fits Casting Profile



TK 8250



Top profile cover for glass 10+10 / 12+12

Reportnumber 89211059-02 | 12th January 2016
16.A352 - EN1991-1-1



Testresults

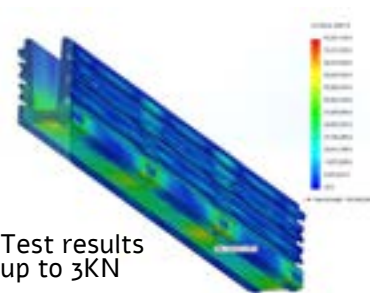
Test results after execution of the test(s) according to National Annex A, Static horizontal loads on parapets and wall partitions acting as barriers and National Annex B, Impact loads on parapets and wall partitions acting as barriers at a difference of heights of EN 1991-1-1 [1, 2]:

National Annex A, Static horizontal loads

Requirement	Description of the requirement	Pass/ Fail/ n.a.																					
EN 1991-1-1+National Annex A	If a partition wall, acting as barrier is mandatory for a difference in height with the surrounding floor, the surrounding terrain, or the surrounding water, a separate line load (q_k) and a concentrated load F_k , must be applied.																						
	<table border="1"> <thead> <tr> <th>Rooms</th><th colspan="2">q_{rep}</th></tr> <tr> <th></th><th>Recommended value</th><th>Test-value</th></tr> </thead> <tbody> <tr> <td>Table 6.12 Rooms category A</td><td>0,5 kN/m 1 min</td><td></td></tr> <tr> <td>Rooms category B, C1</td><td>0,5 kN/m 1 min</td><td></td></tr> <tr> <td>Rooms category C2 to C4 and D</td><td>1,0 kN/m 1 min</td><td>1,15kN</td></tr> <tr> <td>Rooms category C5</td><td>3,0 kN/m 5 min</td><td>3,45kN</td></tr> <tr> <td>An additional load was tested for future applications up to 4,35kN/m1, where the maximum value of the scale is 5,00kN. Higher loads are possible, but this could not be tested.</td><td>4,35 kN/m 5 min</td><td>5,00kN</td></tr> </tbody> </table>	Rooms	q_{rep}			Recommended value	Test-value	Table 6.12 Rooms category A	0,5 kN/m 1 min		Rooms category B, C1	0,5 kN/m 1 min		Rooms category C2 to C4 and D	1,0 kN/m 1 min	1,15kN	Rooms category C5	3,0 kN/m 5 min	3,45kN	An additional load was tested for future applications up to 4,35kN/m1, where the maximum value of the scale is 5,00kN. Higher loads are possible, but this could not be tested.	4,35 kN/m 5 min	5,00kN	
Rooms	q_{rep}																						
	Recommended value	Test-value																					
Table 6.12 Rooms category A	0,5 kN/m 1 min																						
Rooms category B, C1	0,5 kN/m 1 min																						
Rooms category C2 to C4 and D	1,0 kN/m 1 min	1,15kN																					
Rooms category C5	3,0 kN/m 5 min	3,45kN																					
An additional load was tested for future applications up to 4,35kN/m1, where the maximum value of the scale is 5,00kN. Higher loads are possible, but this could not be tested.	4,35 kN/m 5 min	5,00kN																					
		n.a.																					
		n.a.																					
		Pass																					
		Pass																					
		Pass																					



Strength Analysis



Test results up to 3kN

Reportnumber 89211059-03 | 12th January 2016
16.A352 - EN1991-1-1



National Annex B, Impact loads on parapets and partition walls acting as barrier.

Test	Horizontal place impact soft body	Drop height in meters	Height of impact from underside construction (floor level) in mm	Dim. W x H in mm
1	Middle of width and appr. 15cm below the upper edge of sample	1,00 m	Appr. 950 mm	1150x1100mm



Requirement nr.	Description of requirement	Pass/ Fail/ n.a.
NEN-EN 1991-1-1+National Annex B	If a partition wall, acting as barrier is mandatory for a difference in height with the surrounding floor, the surrounding terrain, or the surrounding water, the prescribed impact load must be determined.	
	Gemeten/beoordeeld	
NEN-EN 1991-1-1+National Annex B	The construction is capable of withstanding the impact load, if the soft body impactor is not penetrating the construction.	Pass
NEN-EN 1991-1-1+National Annex B	...and after execution of the test, the residual strength and consistency of the construction is still intact	Pass



All rights reserved to TOMAK LTD. company

For more details
scan this QR



Sigstar | Branding & Graphic design

Inches (in.) edition

US
patent



US 16/331, 194

EU
patent



EP17848291.5



cat v. 4 12/2025



int.marketing@tomak-railing.com



+972-4-6142591



www.tomak-railing.com